

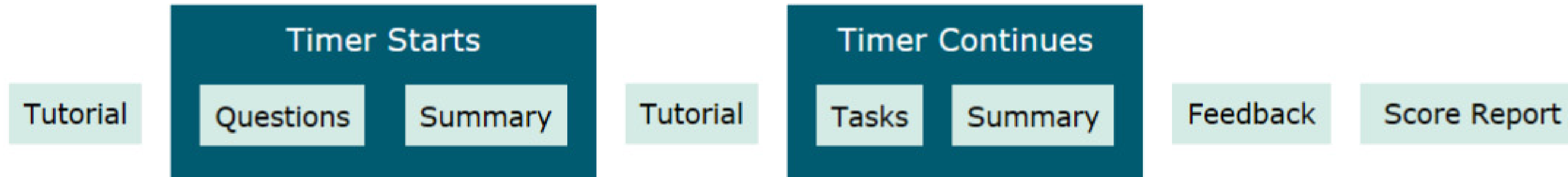


A PEARSON VUE BUSINESS

Adobe Certified Professional 2021 Dreamweaver Exam Tutorial

Sections and Timing

This exam has two sections: a section with questions you will answer in this window and a section with tasks you will perform in Dreamweaver. You will have 50 minutes to complete **both** sections.



After completing the first section, you will see a Section Summary page that allows you to review only the questions in that section. You will **not** be able to revisit those questions after you select the **Submit Section** button on the Section Summary page.

Next, you will see a tutorial that will help you complete the Dreamweaver tasks. Tutorials are not timed. After you complete the second tutorial, you will complete the Dreamweaver tasks. You will be able to review only the Dreamweaver tasks from the second Section Summary page. After submitting the Task section, you will have the opportunity to leave feedback on questions, tasks, and the exam as a whole. At the end of the exam, you will see your score report.

Select the **Next** button to proceed through the tutorial.

Question Section Navigation

The questions have controls at the top and bottom of the screen that allow you to progress through the section. The following image shows these controls:

The screenshot shows a question interface with the following elements and callouts:

- 1**: Points to the text "Question 10 of 10" at the top left.
- 2**: Points to the timer "00:21:22" at the top center.
- 3**: Points to the "Reset Question" button at the top right.
- 4**: Points to a horizontal splitter bar separating the question area from the answer area.
- 5**: Points to a vertical splitter bar separating the options from the answer area.
- 6**: Points to the "Back" button at the bottom left.
- 7**: Points to the "Help" button at the bottom left.
- 8**: Points to the "Mark for Review" checkbox at the bottom center.
- 9**: Points to the "Leave Feedback" checkbox at the bottom center.
- 10**: Points to the "Summary" button at the bottom right.
- 11**: Points to the "Next" button at the bottom right.

The question area contains the text: "Match each term with its definition." The options are: "Milestone", "Scope creep", and "Wireframe". The answer area contains three text boxes with definitions: "A request that causes the cost or timeline of the project to increase.", "A significant event in the project schedule", and "A blueprint that shows the information hierarchy".

1. Identifies the question you are completing and the total number of questions in this section. Monitoring your progress using these numbers will help you ensure that you have enough time to complete all questions and tasks on the exam.
2. Reports how much time you have remaining to complete the exam. Time is shown in hours:minutes:seconds.
3. Use the **Reset Question** button to reset all selections on the question. For example, in a Matching item like the one shown above, selecting **Reset Question** returns all options to the list on the left.
4. Use the horizontal splitter bar to change the percentage of the screen height used to display the question versus the answer area.
5. Use the vertical splitter bar to change the percentage of the screen width used to display the options versus the answer area.
6. Use the **Back** button to return to the previous question. Your response will be saved when you select Back.
7. Use the **Help** button to display help for the specific type of question.
8. Check **Mark for Review** if you want to remember to return to this question from the Section Summary screen.
9. Check **Leave Feedback** if you want to remember to leave feedback on this question.
10. Use the **Summary** button to view the list of all items in this section. You can return to any item from the Section Summary screen to continue your work in this section. You can exit this section of the exam from the Section Summary screen.
11. Select **Next** to save your response and proceed to the next question.

Question Section Summary



After completing the final question, you will reach the Section Summary page.

Each question you marked for review will be indicated. You can navigate to any question from this page. To return to a specific question, select the question number. To return to this page from the question, select the **Section Summary** button. After you finish reviewing tasks, select the **Submit Section** button to proceed to the Dreamweaver task section.

00:34:07

Section Summary

The table below shows a list of all the questions. Each question you Marked for Review is indicated. To return to a specific question, select the question number.

Questions	Marked for Review
Dreamweaver Questions	
Question 1	
Question 2	
Question 3	
Question 4	
Question 5	

Submit Section

 Back

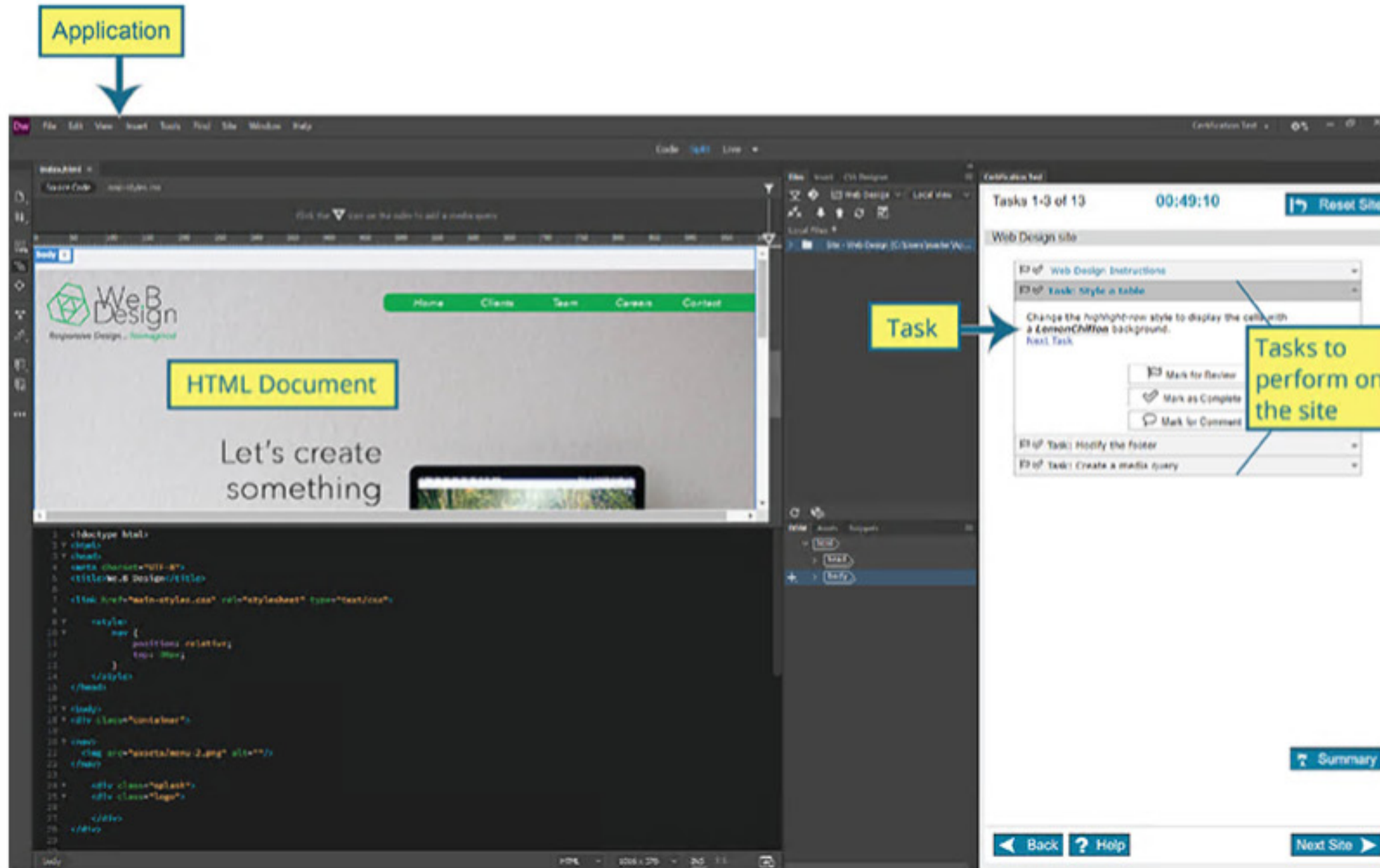
Next 

Dreamweaver Task Section

In the second section, you will complete tasks using Dreamweaver. Tasks are organized into sites. Each task for a site is displayed in the Certification Test panel.

A site is opened with an HTML document loaded. This document will not always be the one you need to modify to perform a task. If you need to perform a task in a different document, use the Files panel to locate and open that document.

You can save a file you are working on at any time. However, you do not need to save a file, unless you are instructed to do so in the task. Your work will be saved automatically when you select the **Next Site** or **Back** button.



Almost all application functionality is available to you to complete each task. You will receive credit for any method of completion that meets the task requirements. For some of the tasks, you will receive credit for each correct part that meets the requirements.

A few features will be blocked during the exam. These include:

- Open
- Help
- Adobe Bridge
- Adobe Stock
- CC Library

Do **not** try to access these features during the exam. None of these features are necessary to complete the exam.

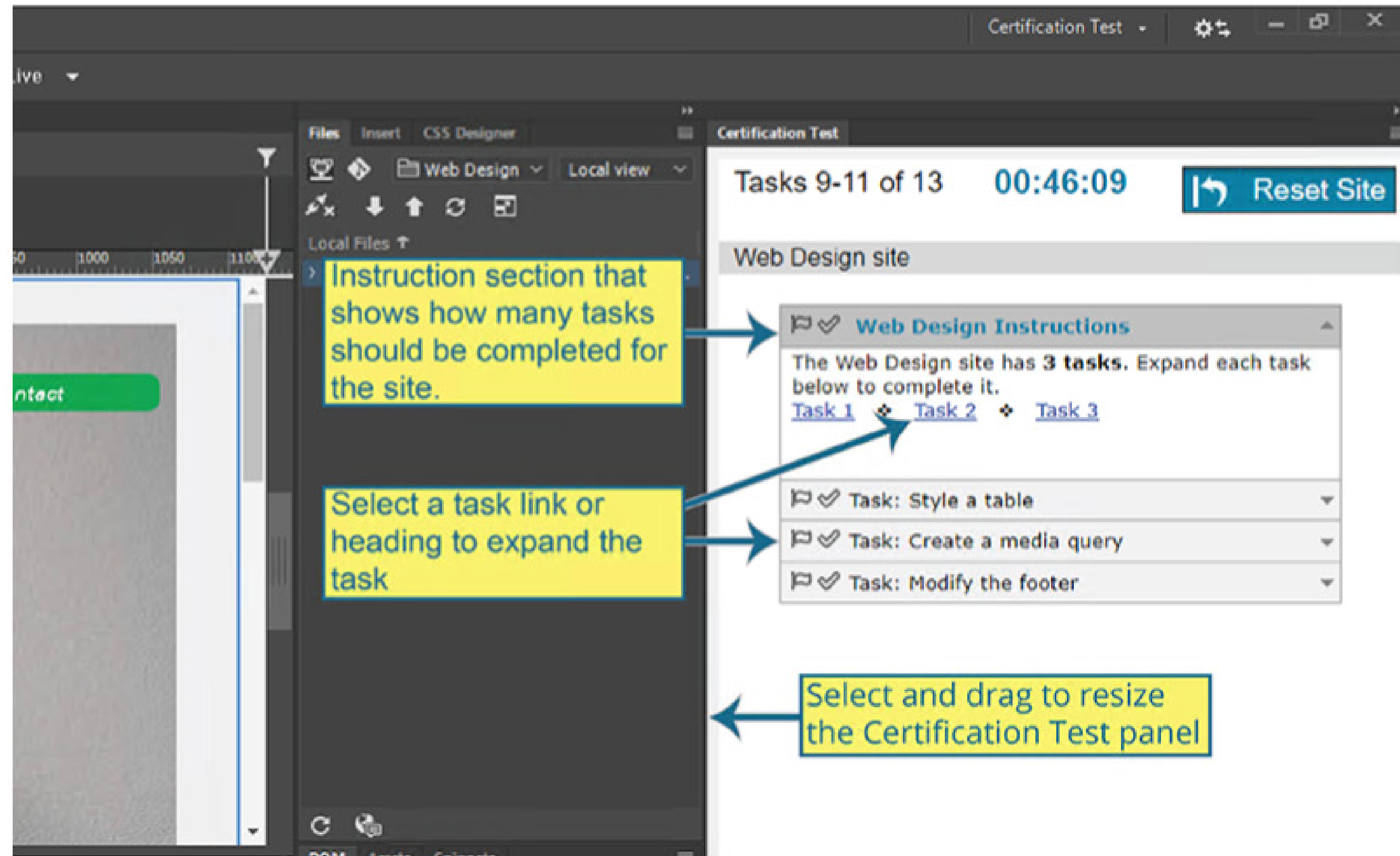
If Dreamweaver crashes or you need to quit the application while you are taking the test, you can resume the exam on the same computer. Your progress will be saved for all tasks you submitted.

Working with the Certification Test Panel

The Certification Test workspace contains only the Certification Test panel. You will need to open other workspaces or display other panels from the Window menu in order to complete tasks. The Certification Test panel has also been added to the default workspaces.

The Certification Test panel acts like any other panel in Dreamweaver. You can float it, dock it, or resize it. Resize the panel as needed to see the task content.

Important: Do not close the Certification Test panel; your task and all navigation buttons will disappear. Do not reset any of the default workspaces. Doing so will cause the Certification Test panel to be removed from that workspace.



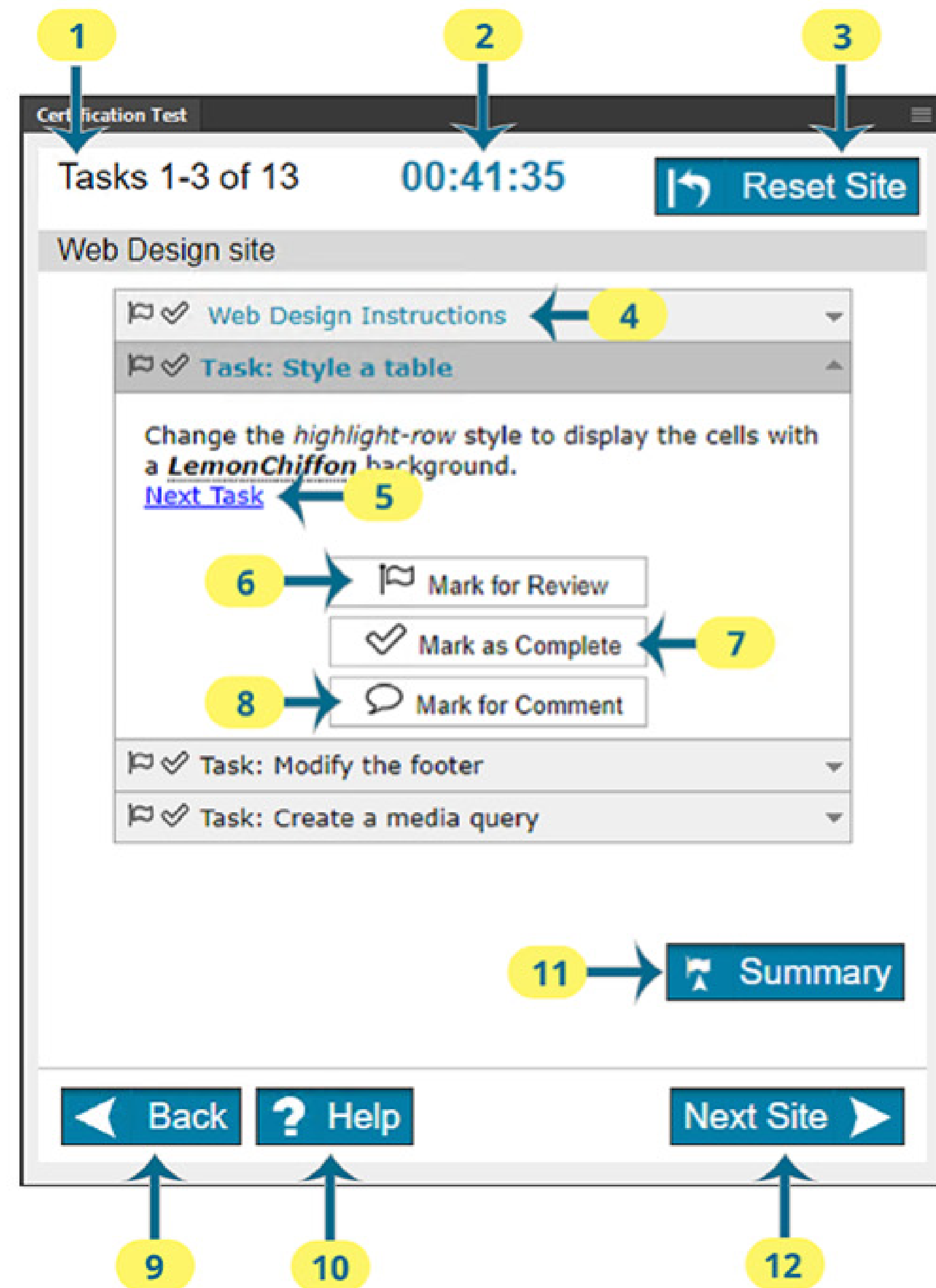
The Certification Test panel shows one expanded task at a time. Each site includes an Instructions section with links to each task for the site. Select a task link or heading to expand a task. To collapse that task and expand a different one, select the heading for the task you want to expand, or return to the Instructions section and select the link.

Note: Be sure to expand each task and complete it. The task heading font color changes to teal after the task has been expanded.

Dreamweaver Task Navigation

The Certification Test panel includes the controls you need to navigate the exam and manage your time. The following image shows these controls.

1. Identifies the task numbers on the current site and the total number of tasks on the exam. Monitoring these numbers will help you ensure you have enough time to complete all tasks.
2. Reports how much time you have remaining to complete the exam.
3. Use the **Reset Site** button to reset the Dreamweaver site to its starting state. You will need to successfully complete **each** task again to score a point for that task, so use this button with extreme caution.
4. Use the **Instructions** section to see how many tasks should be completed for the site. The section also includes links to each task.
5. Use the **Next Task** link to expand the next task in the site.
6. Select **Mark for Review** if you want to remember to return to this task from the Section Summary screen.
7. Select **Mark as Complete** when you have finished this task. Selecting Mark Complete will cause the checkmark for the task to turn green. Marking tasks complete will help you keep track of your progress.
8. Select **Mark for Comment** if you want to remember to leave feedback on this task.
9. Use the **Back** button to return to the previous site. Selecting the **Back** button saves any work you have done on the current site.
10. Use the **Help** button to display general help for the Dreamweaver task item type. **Note:** This is not an application Help button.
11. Use the **Summary** button to view the list of all items in this section. You can return to any item from the Section Summary screen to continue your work on that item. You can also exit this section of the exam from the Section Summary screen.
12. Select **Next Site** to save your document and proceed to the next site.



Task Instruction

The text in the Certification Test panel describes the task you must perform to receive a correct score.

Here are some guidelines to keep in mind:

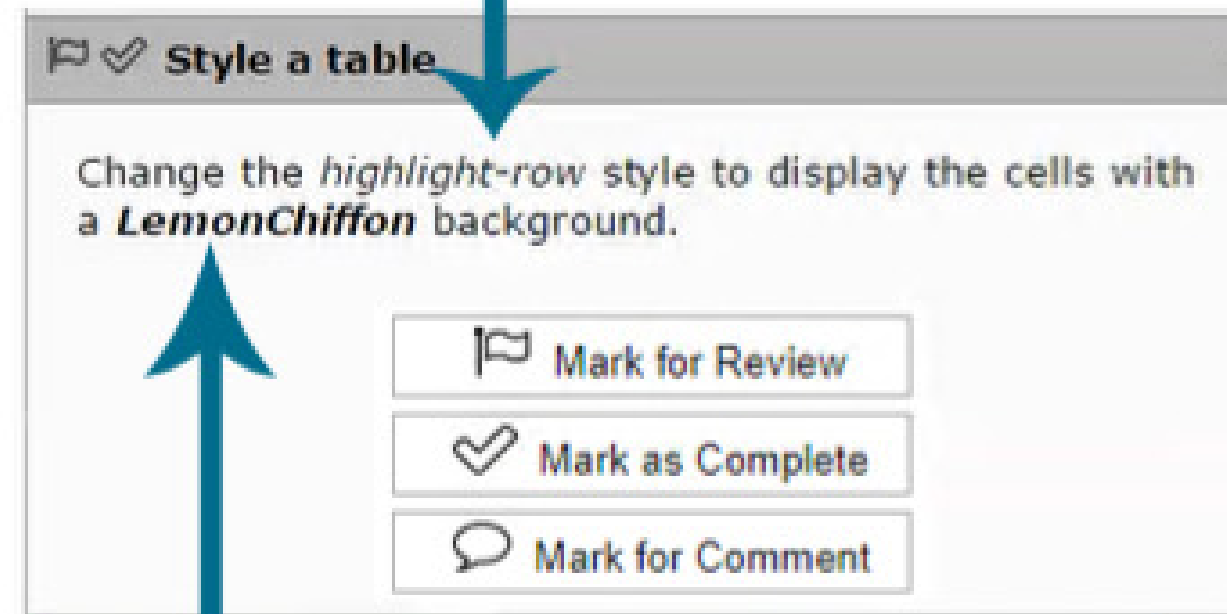
- When a site loads, one HTML file is opened. You might need to open other HTML files to complete the task. Most tasks begins with the text "Open" to identify the file you need to open. If the file is already opened, you do not need to open it again.
- You only need to change the settings specified in the task. If a setting value is not specified, keep the default value.
- Do not make any additional changes to the site. For example, only change CSS styles if the task requires it.
- If you are asked to save or export a file, always save it at the default location or the location specified in the task. Do **not** navigate to other folders.
- Do **not** add assets to CC Library.

Italicized text refers to a filename you must import or an existing part of the document. For example, italicized text might reference a CSS selector or text in a document.

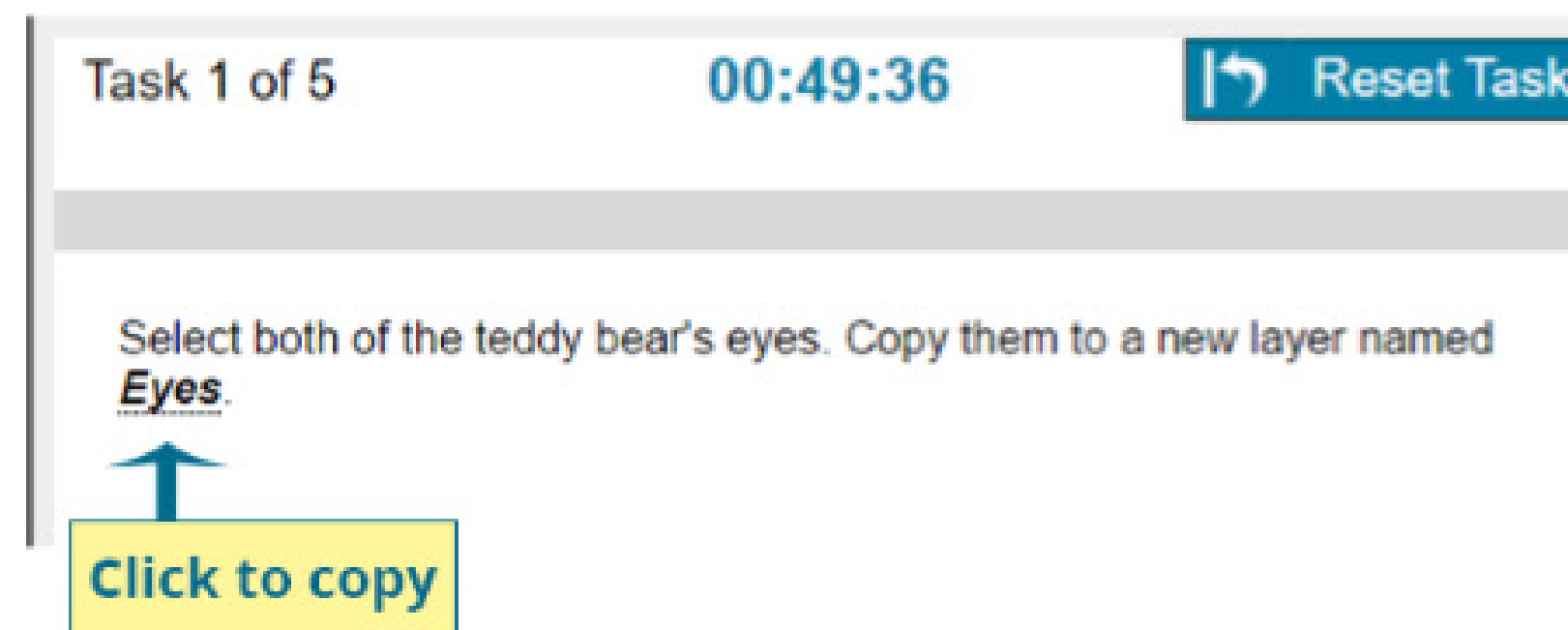
Bold italicized text is text that you must type.

A dotted underline indicates text you can click to copy and then paste into Dreamweaver. If you need to paste the text within a dialog, copy the text before opening the dialog.

Italic indicates a part of the document or an asset.



Bold indicates text you type.



Task Section Summary

After completing the final task, you will reach the Section Summary page.

Each task you marked for review is indicated. You can navigate to any task from this page. To return to a specific task, select the task number. To return to this page from the task, select the **Section Summary** button. After you finish reviewing tasks, select the **Finish Section** button.

Certification Test ☰

00:23:39

Section Summary

The table below shows a list of all the tasks. Each task you Marked for Review is indicated. To return to a specific task, select the task number.

Tasks	Marked Complete	Marked for Review
Web Design tasks		
Task 1	✓	🚩
Task 2		🚩
Endangered Species tasks		
Task 3	✓	
Task 4		

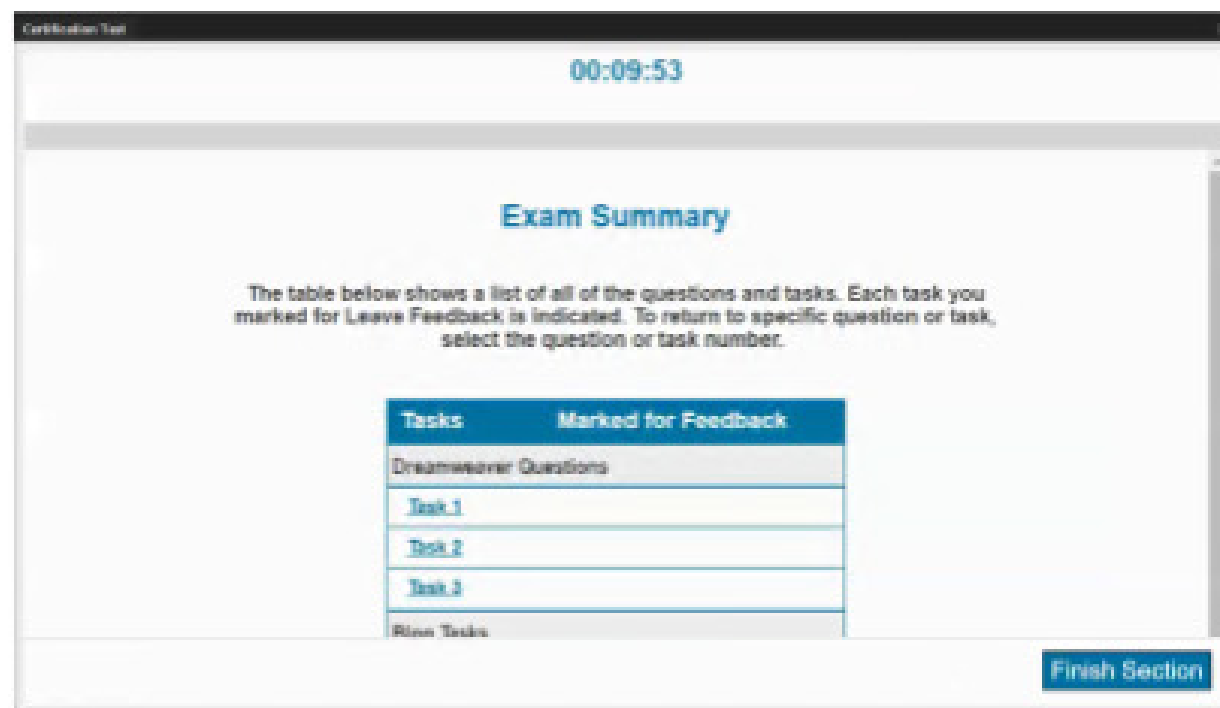
[Finish Section](#)

Exam Feedback

After completing the task section, select the **Leave Feedback** button to leave feedback on individual questions or tasks. You might need to resize the Certification Test panel to see the feedback button.

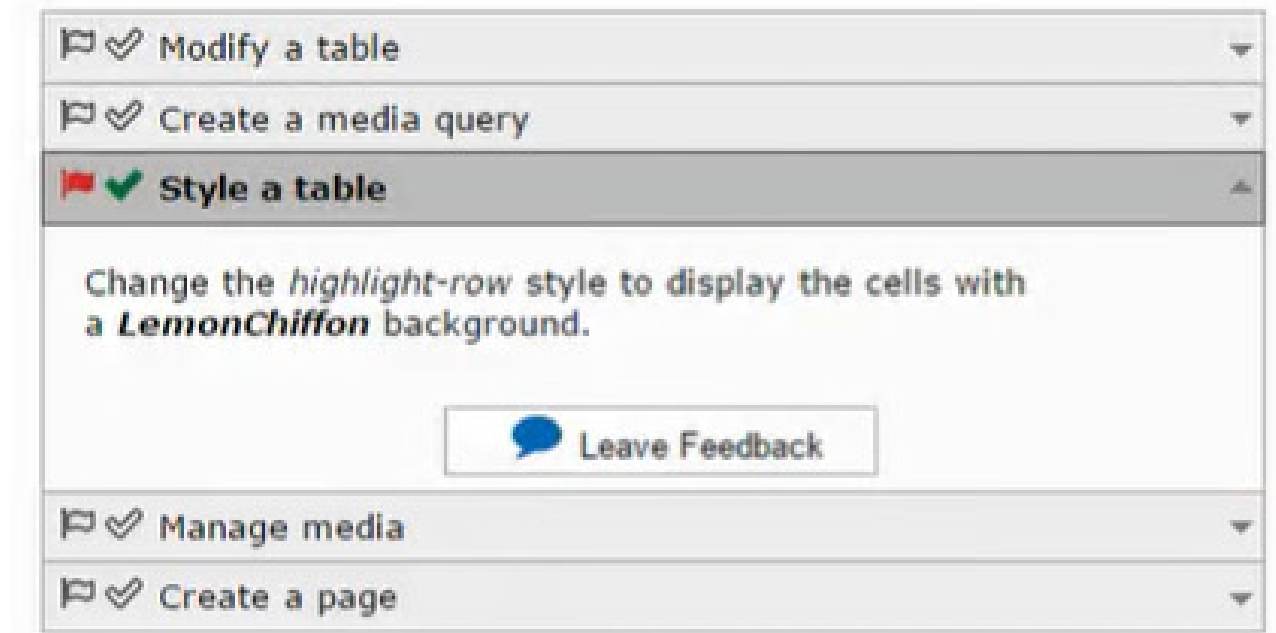


You will see the first question. Leave feedback on that question by selecting the **Leave Feedback** button. In the Task section, you need to click the Leave Feedback button within the expanded task.



You can navigate through the questions and tasks using the **Next** or **Next Site** and **Back** buttons. You cannot make changes to your answers while leaving feedback. You will have 10 minutes to enter your feedback.

To view a list of all questions and tasks, select the **Section Summary** button to visit the Exam Summary page. Each question or task you marked for comment is indicated. You can navigate to any question or task from this page by selecting its hyperlink. After you finish leaving feedback on individual questions and tasks, select the **Finish Section** button to view the Thank You page.



Select the **Next** button to leave feedback for the exam. On the exam feedback page, you can provide feedback using the prompts, or enter your own feedback. You might need to resize the Certification Test panel to see the entire feedback screen. Select the **Next** button to review your Score Report.

Leave feedback about the exam

You may enter feedback about the exam below.

1. Tell us what you liked about the exam.
2. Tell us what you didn't like about the exam.
3. Did you experience any technical problems? If so, please describe them.

Next

Back

Next

Score Report

You must select the **Exit Exam** button to upload your score report. You cannot save or print your Score Report while in the exam. After your Score Report has been uploaded, you can view and print it by logging into the Certiport website.



Exam Score Report

Candidate	Exam Name
	Web Authoring using Adobe Dreamweaver 2021 (v 21.x)

Results	100	200	300	400	500	600	700	800	900	1000
Required Score										
Your Score										

Section Analysis	Final Score
Working in the Web Industry	67%
Project Setup and Interface	57%
Organizing Content on a Page	100%
Working with Code to Create and Modify Content	100%
Publishing Digital Media	100%

Final Score
Required Score 700
Your Score 885

Outcome
Pass 

© 2019 Certiport, a business of NCS Pearson, Inc.



Exit Exam

 Back

Next 